



# KARNATAKA BRAIN HEALTH INITIATIVE KaBHI

9th NATIONAL SUMMIT ON GOOD, REPLICABLE PRACTICES AND INNOVATIONS  
IN PUBLIC HEALTHCARE SYSTEMS IN INDIA



Department Of Health & Family Welfare  
Government of Karnataka



# Neurological disorders & KaBHI



## Burden



3.7 in 10 persons suffer from neurological disorders

Viz. epilepsy, dementia, stroke and headache



## Why KaBHI



On one hand: **PREVENTION, EARLY DIAGNOSIS, TREATMENT** of neurological disorders

On the other hand: **PROMOTION** of brain health



provide an **EVIDENCE-BASED, INTEGRATED** and **SUSTAINABLE** model for the **PREVENTION** and **EQUITABLE** care of neurological disorders across the life course and strengthen neurological service delivery in India



# Pillars of KaBHI



## STRENGTHEN CARE PATHWAYS

Connecting AAMs to Tertiary care centres  
Improve access to medicines



## CAPACITY BUILDING

Screening: Upto CHO and ASHA  
Diagnosis: Doctors & Nurses  
Management: All clinical staff  
Rehabilitation: Neuro palliative care



## RISK REDUCTION STRATEGIES

Targeted screening of high-risk individuals  
Widespread Awareness activities



## DIGITAL HEALTH MANAGEMENT

Teleneurology  
Telementoring  
Tele-rehabilitation

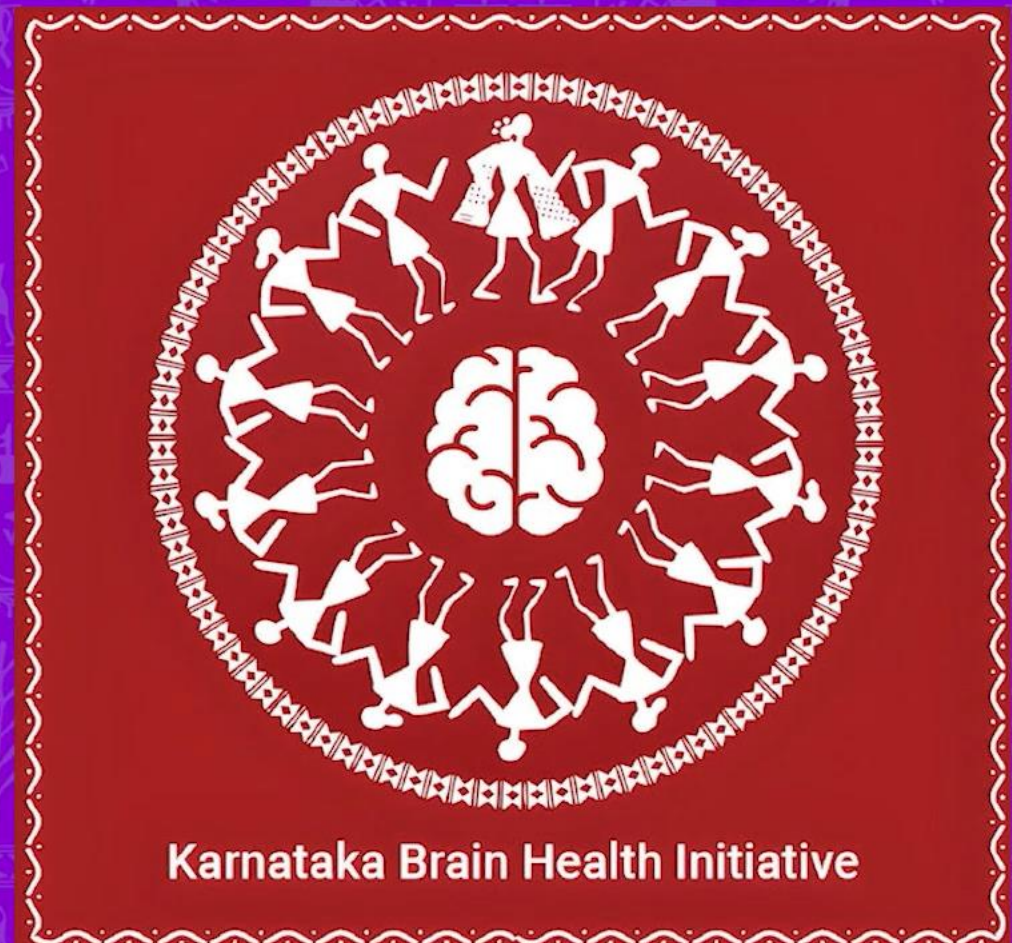


## CONVERGENCE

With existing programmes like:  
NMHP  
NP-NCD  
UHC-CPHC



**Department of Health and Family Welfare  
Karnataka**



**Karnataka Brain Health Initiative**

# **KaBHI: a narrative snapshot**



# Broad Outcome



**Persons Screened:**  
(for neurological disorder risk)  
**3,00,360**



**Consultations:**  
**48,077**



**Awareness Activities:**  
**1,589**



**Community Engagement:**  
**1,93,104**  
(persons sensitized)



Weekly 33 radio sessions  
aired



**Training Sessions:**  
**201**



**Healthcare Professionals Trained:**  
(across all levels)  
**9,123**  
significant improvement noted  
in post training evaluations



# Outcome Analysis: Service Provision



## Neurological consultations:

Headache	<b>19,550</b>	
Stroke	<b>7,345</b>	
Epilepsy	<b>6,019</b>	
Dementia	<b>209</b>	
Other neurology	<b>7,211</b>	



## Multidisciplinary Care:

Physiotherapy	<b>27,492</b>
Nursing care	<b>42,464</b>
Psychological counselling	<b>30,846</b>
Speech & Language therapy	<b>7,948</b>



## Digital systems:

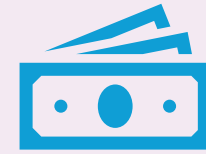
Tele neurology	<b>129</b>
Tele mentoring	<b>60</b>
Tele monitoring	<b>340</b>
Tele ICU	<b>45</b>
Tele rehabilitation	<b>174</b>

## Annual Cost per unit ₹ 52,83,250/-



### Human Resource ₹41,40,000

Neurologist / Neurosurgeon/MD Physician /MBBS:	1
Nurse:	2
Physiotherapist:	1
Speech therapist:	1
Clinical Psychologist:	1
District coordinator:	1



### Others ₹11,43,250

Training:	₹ 3,00,000
Operational Expenses:	₹ 12,000
Miscellaneous/ Travel/ procurement:	₹ 1,00,000
IEC:	₹ 2,31,250
Drugs:	₹ 5,00,000



# Way Forward



## **National Task Force on Brain Health**

(constituted - Aug 2024):

**Proposed expansion at National Level**

## **WHO Brain Health Unit:**

**Recognized KaBHI as a case study for Intersectoral Global Action Plan**

**Establish Stroke-ready centres at district level**

**Increase awareness about neurological disorders in the community for better care seeking**

**Integration with other national programs like NMHP, NP-NCD and MNS Package at AAM**



# Statewide Brain Health Clinics



**Teleneurology and Telementoring**

# Thank you



**Nursing Care**



**Physiotherapy Care**

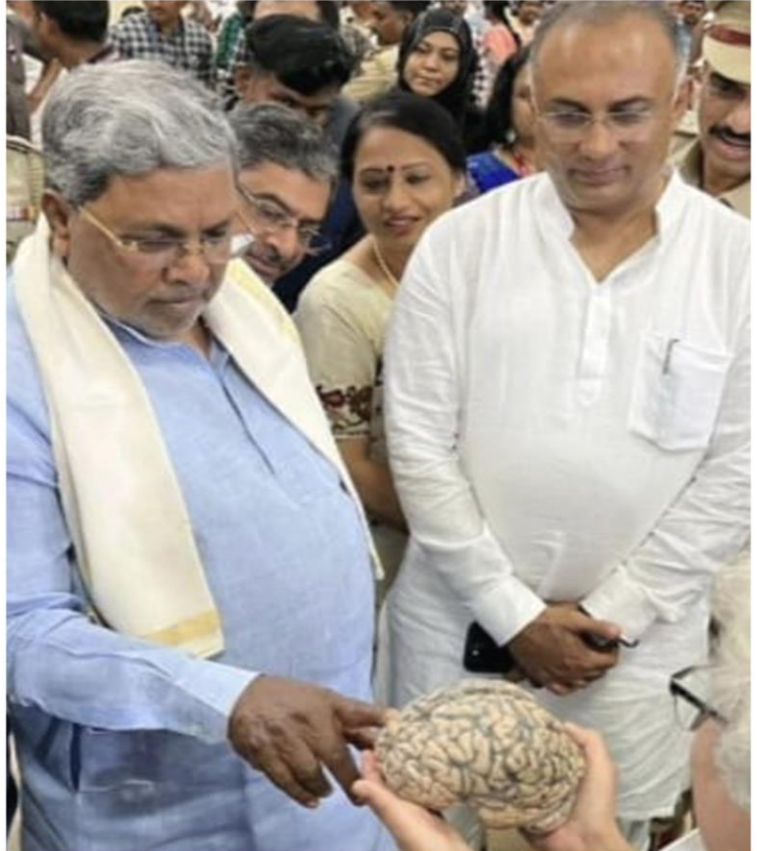
## KaBHI Multidisciplinary Care



**Psychological Care**



**Speech & Language Intervention**



*MP KC General*



*Shimoga*

## Statewide Training Programs



*Bidar*



*Davanagere*



*Yadgiri*



*Ramanagara*