

**9th NATIONAL SUMMIT ON GOOD,
REPLICABLE PRACTICES AND
INNOVATIONS IN PUBLIC HEALTHCARE
SYSTEMS IN INDIA**

JHARKHAND

STRENGTHENING COMMUNITY PROCESS IN JHARKHAND



Sahiya App

A unified platform for managing Sahiyas' activities, reporting, and payment integration.



**A cost-effective training
Odd & Even arrangement
model for Sahiyas in
Jharkhand.**



**Jharkhand Swasthya
Prahari**
Performance-driven
recognition for Sahiyas.



Sahiya Radio
An edutainment
program focused on
health awareness.



Sahiya App: Enhancing Service Delivery

- *Integration of Sahiya Database with Spatio-Temporal Framework*
- **Real-Time Data Access:** Improves monitoring at State, District, Block, and Cluster levels.
- **Centralized Reporting:** The Sahiya Information Management App (SIMA) has been enhanced to streamline and consolidate all Sahiya reporting.
- **Efficient Incentive Payments:** Ensures timely and accurate payments to Sahiyas, reducing delays.
- **Digitization:** Transitions from manual to online reporting for better efficiency and accuracy.



Sahiya App: Enhancing Service Delivery

05

PFMS

Attach photograph for the claim form
Payments are made directly to Sahiya's bank account

04

Payment Disbursal

Payment file is Automatically sent to PFMS
For payment in bank accounts

03

Payment Sanction



DPC / BPMU
Prepares digital
Sanction order

Claim Submission



submit Claims

OR

Through a mobile app raise her claim

01

Claim Capture



Sahiya will capture the claim on a Mobile app

02

Claim approval

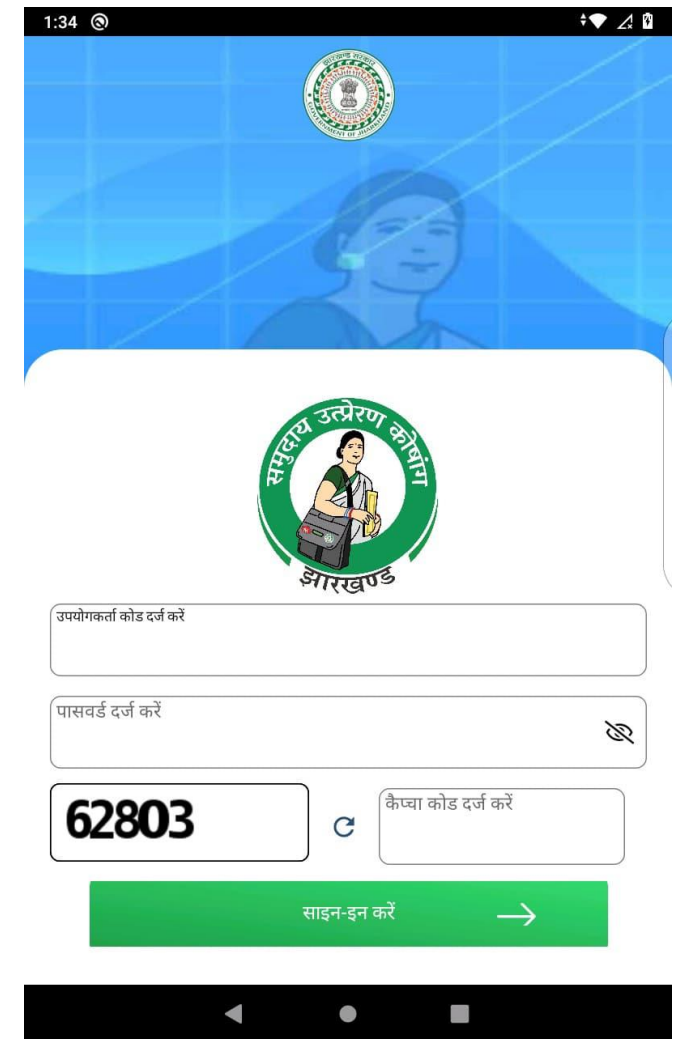


Sahiya Sathi, BAF, DAF, DPC
approve / reject the claim
online through a web
application



Sahiya App – Transformative Features

- **Bilingual Application**
- **Newborn & Migration Tracking:** Tracks newborns and ensures continuum of care for migrating children.
- **Delivery Tracking:** Monitors institutional and home deliveries.
- **High-Risks Alerts:** Notifies for high-risk babies & pregnancy.
- **Geographical Tagging:** Links babies to Anganwadi Centres.
- **Data Security:** Stronger verification, validation, and security features.
- **Performance & Incentive Management:** Integrated monitoring and incentive system.
- **Training & Counseling:** Includes mechanisms for training, IEC, and counseling.



The screenshot shows the login interface of the Sahiya App. At the top, there is a status bar with the time 1:34 and various icons. Below it is a blue header with the Government of Jharkhand logo and a background image of a woman. The main content area is white and features the 'समृद्धि उत्प्रेरण कोषांग झारखण्ड' logo. There are three input fields: 'उपयोगकर्ता कोड दर्ज करें' (User ID), 'पासवर्ड दर्ज करें' (Password), and 'कैप्चा कोड दर्ज करें' (Captcha). The first field contains the number '62803'. A green button labeled 'साइन-इन करें' (Sign In) with a right-pointing arrow is at the bottom.



Cost-Effective Training Approach for Sahiyas (Odd & Even arrangement)

Sahiya Training Challenges :

- Large number of participants (approx. 42000 Sahiya) to be trained.
- Time-consuming training and implementation)
- Resource limitations

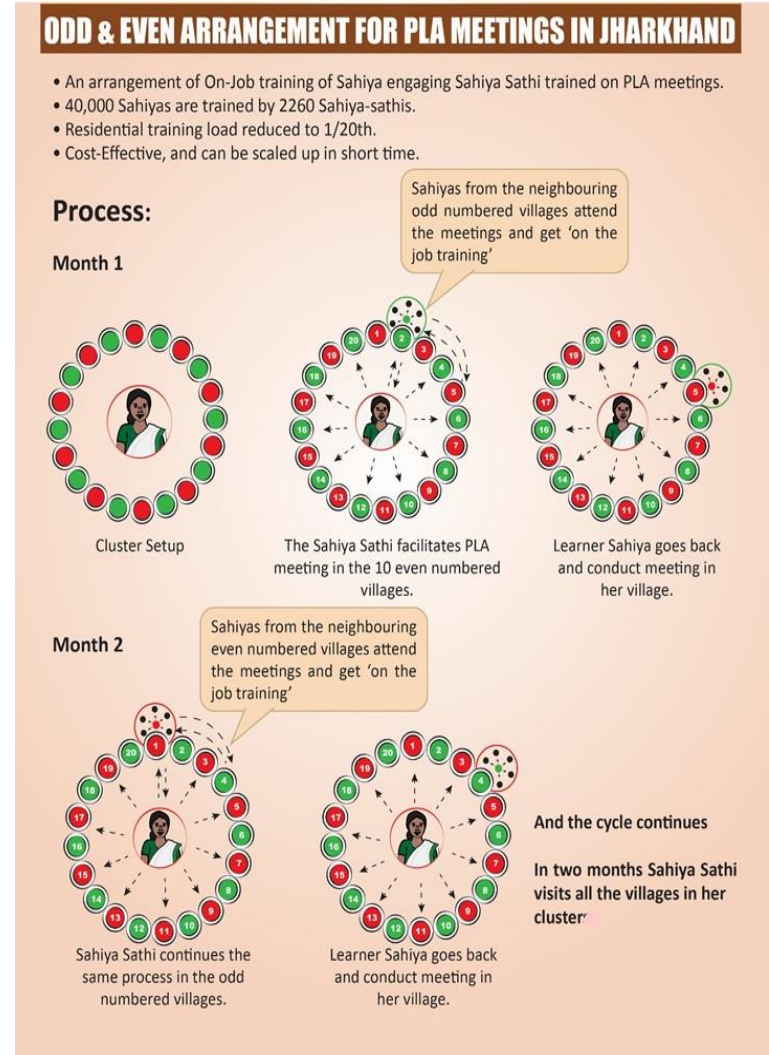


“A need for an innovative approach to ensure training quality while reducing costs”



Odd & Even arrangement

- Sahiyas are paired in an odd-even pattern for "on-the-job" learning.
- While one Sahiya receives training from a Sahiya Sathi, the paired Sahiya observes and replicates.
- This reduces residential training days and promotes peer learning.
- Quality of training will be maintained at the village level, ensuring context-specific, practical learning.
- A tracking mechanism at the District and State levels will monitor progress, ensuring consistent, high-quality outcomes.



Impact of Odd and Even arrangement

- Applied to Participatory Learning and Action (PLA) scale-up in Jharkhand, covering 40,000 Sahiyas across 30+ meetings.
- Reduced training costs from ₹12 crore to ₹90 lakhs, while enhancing engagement.
- Third-party evaluation: Sahiyas and Sahiya Sathis showed equal effectiveness in conducting meetings (66% led by Sathis).
- High community participation, demonstrating successful knowledge transfer.



Swasthya Prahari – Performance-Based Recognition for Sahiyas by GoJ

Motivating 42,000 Sahiyas has been a challenge without systematic evaluation or performance-based incentives.

- A structured approach was needed to recognize and motivate.
- Jharkhand Swasth Prahari Programme started in FY 2022-23 through state budget. (Sankalp No. – 21(HSN) 6-1-2022.



- 14 key indicators, on RMNCHA+N, NCD, and disease screening, are used for evaluation.
- Sahiyas are ranked and rewarded, based on their performance.
- Performance assessments through the Sahiya App.



Impact & Recognition of Sahiya

Over 39,964 ASHAs assessed across 24 districts in the last FY with a total incentive distribution of ₹22 crores.

Golden Sahiya (8,508): Score ≥ 90 , rewarded with ₹1,000

Silver Sahiya (12,402): Score 81-90, rewarded with ₹500

Bronze Sahiya (8,726): Score 71-80, rewarded with ₹250

White Sahiya (4,892): Score 50-70, no incentive

Revised incentive are 2000/- max. per month

Outcomes : Improved motivation, service quality, and workload balance

Recognition at the state-level Sahiya Sammelan



Golden Sahiya



Silver Sahiya



Bronze Sahiya



White Sahiya



Sahiya Radio–An Edutainment Program on Health



- Broadcasted by NHM in partnership with All India Radio
- 15-minute weekly program in an entertainment-education (e-e) format
- Covers a variety of health issues and programs, addressing misconceptions and providing disease-related information
- Health experts offer advice to resolve common doubts
- Dubbed in local languages (Mundari, Ho, Santhali, Nagpuri, Oraon) for wider outreach



Sahiya Radio.....

- 288 episodes broadcast on various public health issues and health programs
- Available on social media platforms for wider reach
- Annual budget: ₹12 lakh (RoP Approved)

www.youtube.com/@SahiyaRadioNHMJharkhand

[instagram.com/sahiya_radio_nhrm](https://www.instagram.com/sahiya_radio_nhrm)

x.com/SahiyaRadio





**Thank
You !**

