



Introduction to Eye Care For FLW



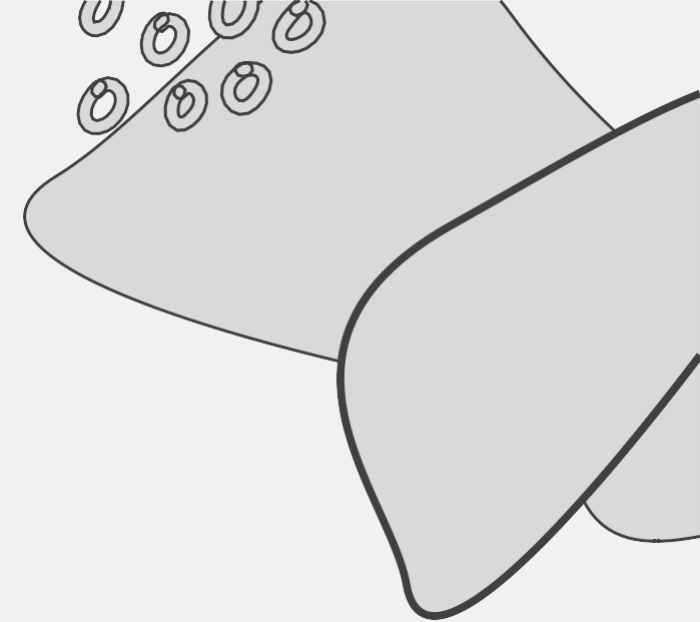


WHY IS THERE A NEED FOR EYE CARE?

India has around 4.9 million blind people and 32.9 million people with visual impairment (presuming the population of India as 136 crores).

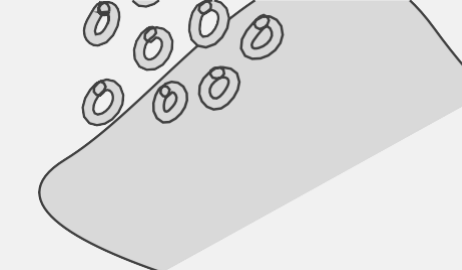
(Source-National Blindness Survey- The Rapid Assessment of Avoidable Blindness (RAAB) survey India- 2015-2019).

Refractive Error and cataracts are the most common causes of visual impairment in the country.





WHAT IS THERE IN THE TRAINING MANUAL?

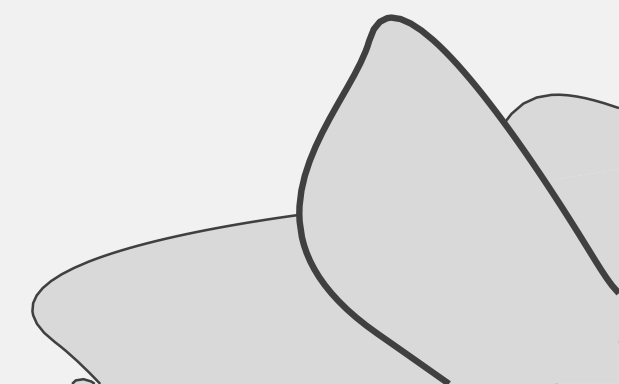


**Understanding
our Eyes and
Vision Testing**

**Protocols for
detection and
action for
Common Eye
Problems at
Community
and Primary
care level**

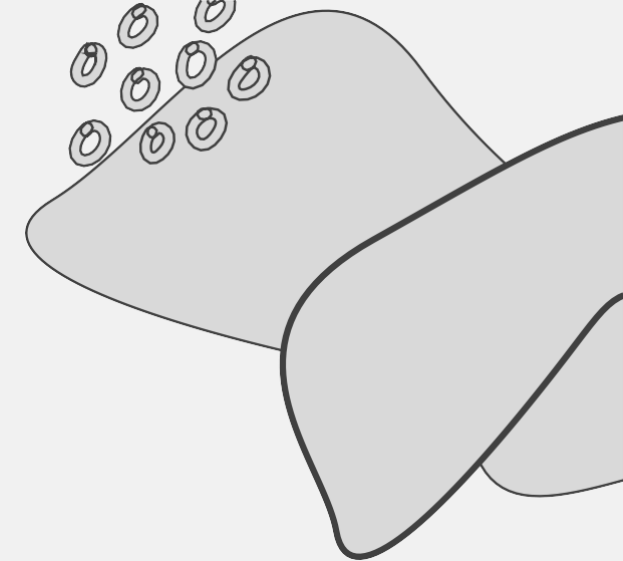
**Health
promotion
activities
for Eye
Health
Eye
Donation**

**Service
delivery
framework
and roles of
the Primary
Health Care
Team in Eye
Care**



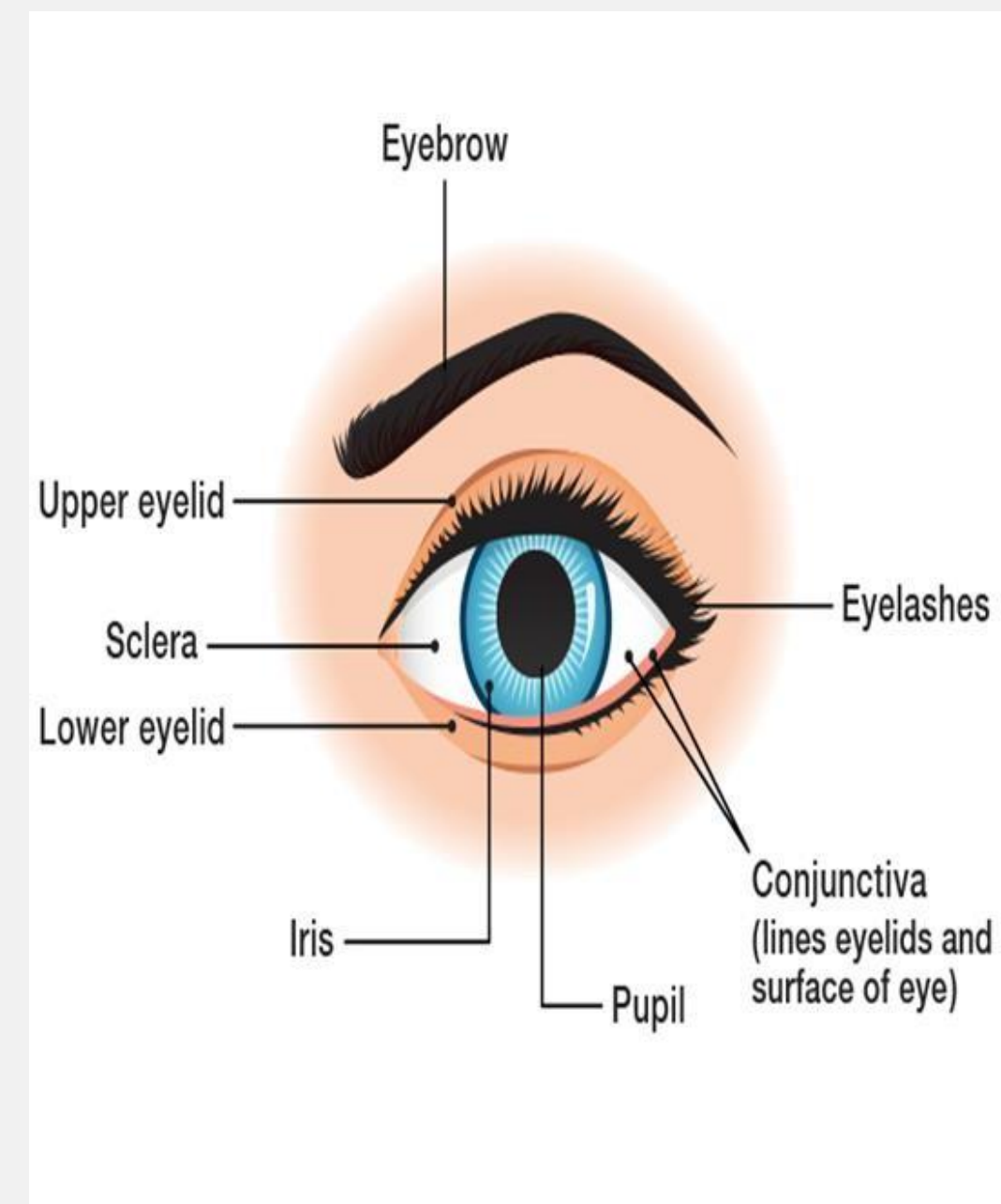


STRUCTURE OF THE EYE



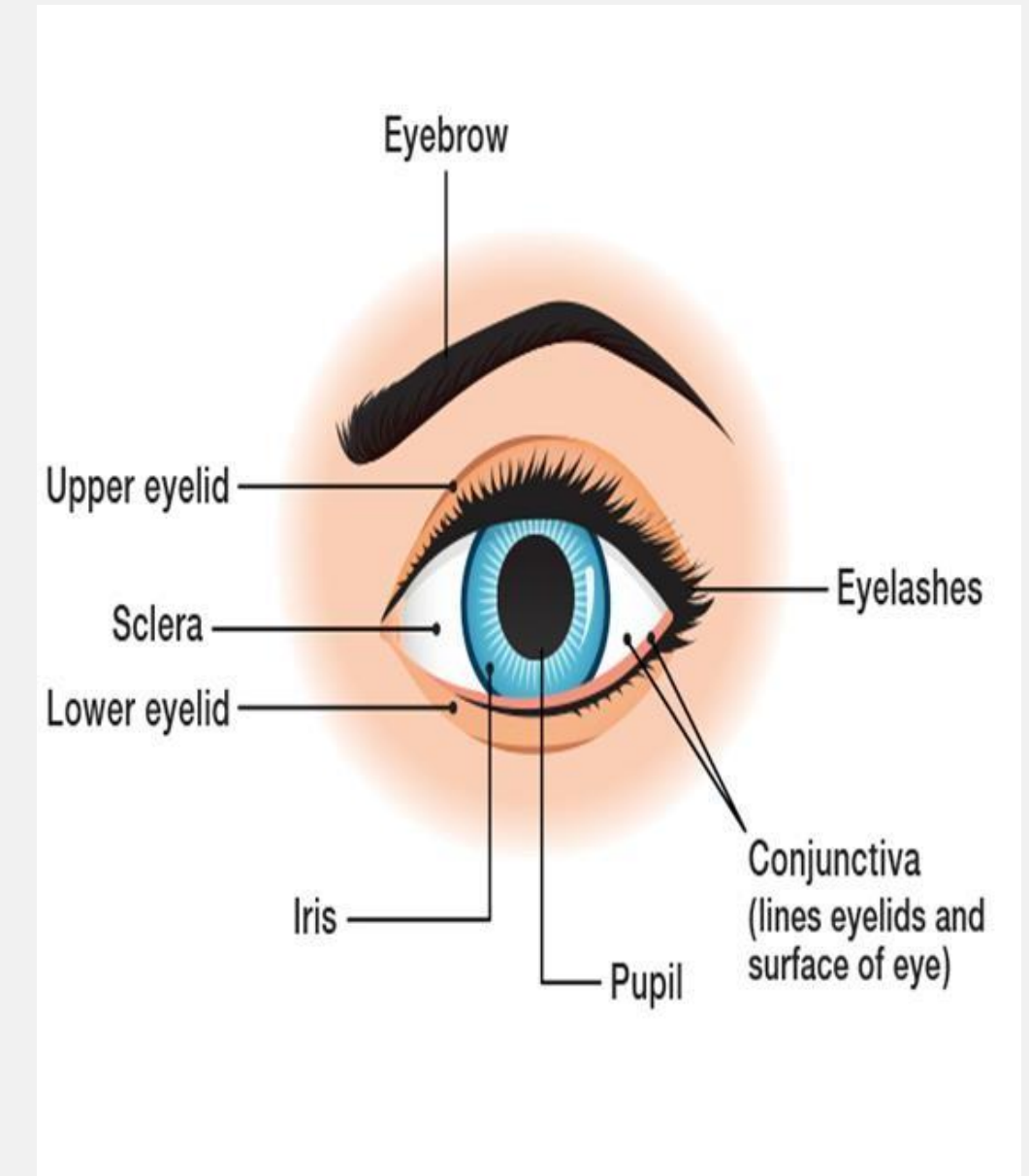
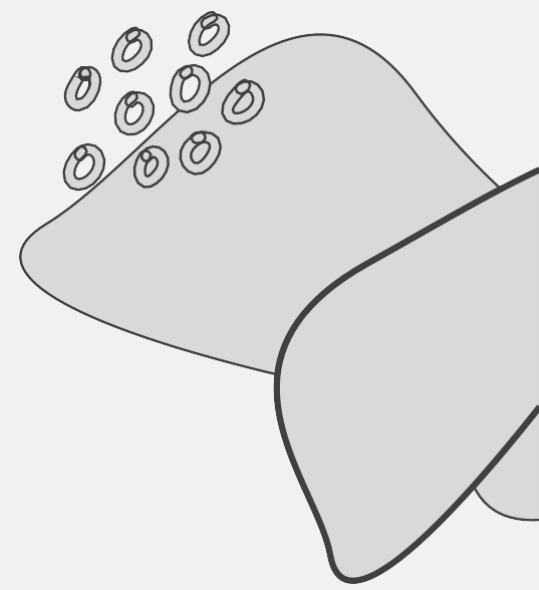
The Human Eye consists of–

- Two eyelids in each eye– Upper and Lower.
- The cornea– central transparent dome like layer that covers the front of the eye.
- The pupil, or black circle at the centre of the eye, is an opening through which light can enter the eye.

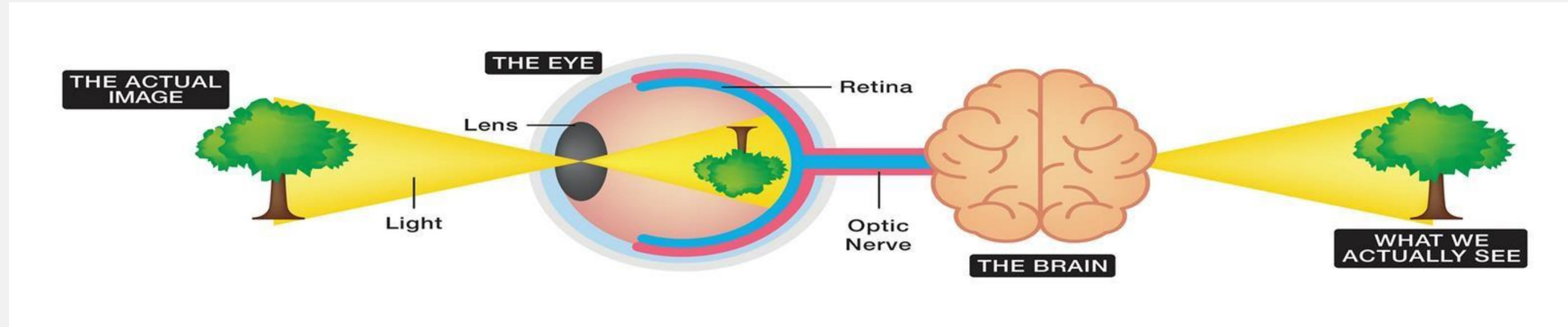




- The iris, or coloured part of the eye (people have black, brown, green or blue colour eyes). It controls how much light enters the eye by changing the size of the pupil.
- A clear lens is located behind the pupil.
- The sclera, or white part of the eye, protects the eyeball.
- The innermost circle inside the eye is retina.



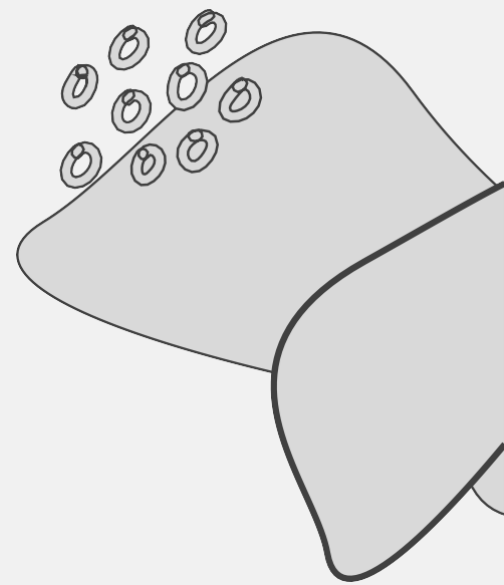
HOW DO WE SEE?



The rays from the object are focused through the cornea, enter the eye through pupil, then the lenses to reach finally into the back of eye, that is the retina.

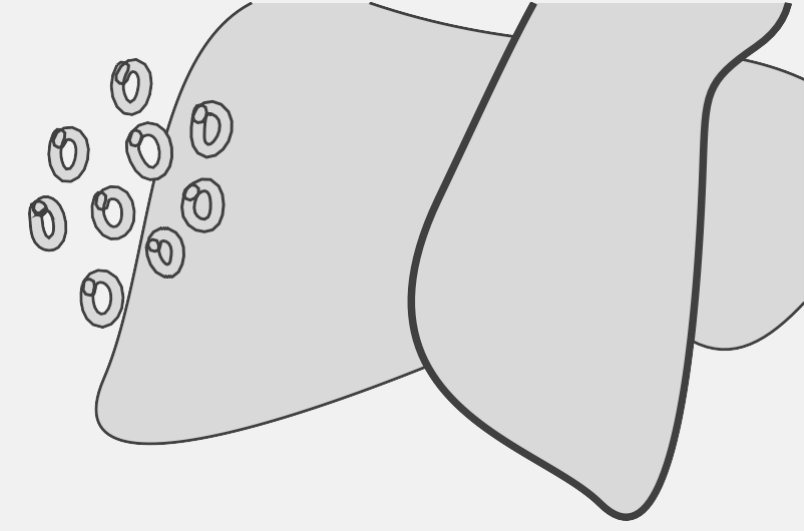
From here, signals are sent to special nerve called as optic nerve and that helps in forming the images that we see.

- ***If any part of this vision process is damaged then the person will have a difficulty in seeing properly.***
- ***We see differently with one eye than we can see using both the two eyes.***
- ***Seeing from both the two eyes helps us in getting the overall real picture of the objects.***

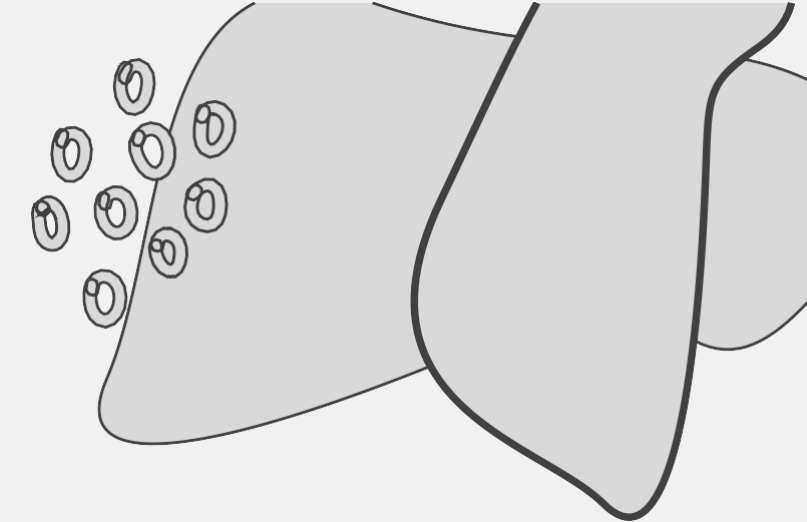




EVALUATION



- Iris is the transparent structure that comes first in contact with ray from a object.
- Signals from retina to brain is carried by olfactory nerve.
- Glaucoma is the most common cause of causes of visual impairment in India.
- The white portion of the eye is known as lens.



EVALUATION

- Iris is the transparent structure that comes first in contact with ray from a object. **FALSE**
- Signals from retina to brain is carried by olfactory nerve. **FALSE**
- Glaucoma is the most common cause of causes of visual impairment in India. **FALSE**
- The white portion of the eye is known as lens. **FALSE**



Thank You

